

Mill House Quilts

100 Baker Street • Waunakee, WI 53597

(608) 849-6473 • info@millhousequilts.com • www.millhousequilts.com

Hours: Monday–Saturday, 9am–5pm • Thursday, 9am–8pm • Sunday, 12–4pm

YOUR QUILTING HAVEN

APRIL–JUNE 2009

QFL: Quilting Football League



QFL is a quilters' shopping league starting in April, pre-season, and playing four quarters (months) through August. Join the Mill House team and be ready for fun meetings culminating with our own Super Bowl party complete with MVP (Most Valuable Piecer) award in August. You will get your own stats book containing a discount coupon for each of the approximately 50 stores participating, and the chance to win 100 fat quarters or 25 yards of fabric. Each week the QFL web site will feature a free pattern, recipe, or game and information about store shopping specials available only to QFL members. We'll have at least one visit to an away team's store, and team members are free to organize as many trips as they like. The team membership fee is \$20 for the season. Sign ups will be taken all season, but the sooner you sign up, the sooner you get your shopping coupons. **Team meetings are 1st Thurs. of the month, 6-7pm.**

LIFE IS FULL OF CHANGES! *Always has been and always will be. Change can be so exciting—like buying a quilt store after working at home for years, watching a grandchild learning to sit, meeting new customers who become instructors, starting and participating in new programs and events, and finding new inventions at Quilt Market. We move fabrics around in the store, both out of necessity and sometimes just for fun.*

We've got several new instructors and classes plus returning instructors with new classes and favorite repeats. Change goes in circles. EQ (Electric Quilt) is a popular computer design program. Our EQ club is growing, but at the same time, we are offering a class in the basics of block drafting using a pencil and paper.

Wherever you are in your quilt journey, we hope to have something that is an exciting change for you—new fabrics, patterns, classes, clubs, and friends. Happy stitching.

Dianne

Bag Lady Express Bus Hop MAY 1–2

Join the fun as we shop hop in three states—Iowa, Minnesota, and Wisconsin. A free Bag Lady Express pattern has been designed by Yellow Bird Art exclusively for our Hop.

Iowa shops include Yellow Bird Art, Lansing and Pine Needles Quilt Shop, Cresco. Minnesota shops are Quilted Treasures, Rogers, and Quilting Cupboard, Rochester. Wisconsin shops include The Calico Shoppe, Eau Claire, Life's A Stitch, Janesville, Country Sampler, Spring Green, and Mill House.

Price includes bus, motel (two to a room), and all meals for \$99. It's a steal of a deal. A limited number of single rooms are available for an additional fee of \$35.



4th Annual Garden Party PURSE PARTY • MAY 3

We're having our annual spring party with purse designer Jamie Kalvestran. Have you ever wondered how and why some features are designed or placed? Jamie will highlight what her thoughts were as she planned each bag. You'll learn some techniques are pretty easy even though you may have thought they were hard to do. We'll have a gift for everyone plus lots of door prizes and food. Join us for a fun afternoon. \$25



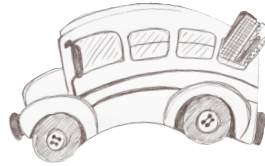
THORNBERRY QUILTS: OKLAHOMA TWISTER

Oklahoma Twister is a fun, easy quilt to make. You may like the block so much that you want to make a second quilt with a different setting.

BUS TO THE INTERNATIONAL QUILT SHOW IN CHICAGO

APRIL 17 OR 18

As I write this, we have a few seats left, mostly on Saturday, April 18, so you may still be able to travel to the show with us in hassle free comfort. Mill House is sending buses to the International Quilt Show in Chicago on Friday, April 17 and again on Saturday, April 18. Buses will leave Waunakee at 7:15am with pick ups at East Towne and West Towne Shopkos, returning at approximately 7:30pm. Price includes bus, show ticket, light snacks down and back, and door prizes. Gather your friends and plan for a fun day. \$55



GADGET GURU

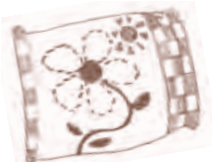
THIRD WEDNESDAY • 10:30-1:30

It's a free class every month! Stop in on the third Wednesday of the month anytime between 10:30-1:30 and see Judy's demo. Each month a topic is selected and Judy researches products and ideas old and new which are useful for that month's topic. April's topic is the strip tube ruler.

BUCK A BLOCK

Buck 5 began September 1 and runs through August, 2009. We've got two great samples to show you. Both a twin and queen size option are given in the finishing pattern. For those of you new to the Buck A Block™ program by Thangles, BUCK A BLOCK entitles you to a block kit for \$1 a month for 12 months as long as you follow the rules. The rules state that when you sign up, you get the current month's kit for \$1. As long as you make the block and bring it to the store any time during the next month, you will continue to get the current month's kit for \$1. Any past month's kit is \$3. If you do more than one colorway, you get the first kit for a dollar and each additional kit for \$3. A limited number of finishing kits are available.

CONKERR CANCER PILLOWCASES FOR KIDS



Thanks to everyone who has brought in pillowcases. We collected about 450 pillowcases this winter. The pillowcases are given to children who have long and/or frequent hospital stays to help brighten their days. Mill House continues to be a drop off site. www.ConKerrCancer.org

SYLVIA'S BRIDAL SAMPLER

Jennifer Chiaverini's new book *Sylvia's Bridal Sampler* is being released in March. For those of you who aren't familiar with the Elm Creek Quilts book series, Sylvia married quite late in life. Her quilting friends made a gorgeous sampler quilt as a wedding gift. Many people in the Madison area had the opportunity to make blocks for this quilt, first shown with partial directions in Jennifer's book *Return to Elm Creek*. Anyone who participated in the original quilt may purchase the book at 15% off of the regular price.

NEW PRODUCTS

We have the complete line of Moda's Wildflower Serenade II. Full line fat quarter bundles are available. Other full lines ordered are Benartex's Once Upon a Christmas and I Believe in Santa, Clothworks' Millie's Garden, Kona Bay's Autumn Tonals and Art Treasures (two fabrics are released each month for 12 months starting in June), Marcus Brothers Metro Natural and Sachet Potpourri, Maywood's Flourish, and P & B's Arabezia. We have lots and lots of other wonderful fabrics ordered including a monthly shipment of batiks. Most of the Christmas fabrics arrive in May and June if you want the best selection.

SUMMER SHOP HOP JULY 22-26

The annual South Central Wisconsin Quilt Shop Hop is Wednesday, July 22 through Sunday, July 26. Grand prize this year is a \$250 gift certificate to the long armer of your choice. The grand prize drawing will be from returned passports from people who visited all twelve stores. Twenty-five other prizes will be awarded. These prizes will be drawn from a bin of name slips. You may enter your name once for each \$10 pre tax that you spend at a participating store. (Bring along a supply of address labels to make your entries easier.) Each of the twelve stores has designed a free pattern for the Hop using the block Fanny's Favorite. Hoppers will also receive a free fat quarter at each store. We will have buses available on Thursday, July 23 and Friday, July 24, \$45 for one day or \$80 for both days. Fee includes lunch. Bus sign ups are through Saving Thyme Quilt Store in Stoughton, 608 877-0075. Join us for a fun week. Newsletters will be available at each store. Information is also on the web at www.wishophop.com.

QUILT APPRAISALS SATURDAY, MAY 9

Carol Butzke will be at Mill House on Saturday, May 9 from 9:00-5:00 giving written quilt appraisals. Each quilt requires a half hour time slot and the fee is \$40.

BUS TO THE AQS QUILT SHOW IN DES MOINES OCTOBER 29-30

Mill House Quilts has monthly clubs which meet to share a common interest. All clubs are free and may be joined at any time. Several require a special purchase.

Clubs

CLUB NEWS: A new appliqué club is starting. Meetings are the second Friday of the month from 9:30-11:30. Bring any project you have to work on. We are saying good-bye to the Nearly Insane Club as they have now completed the presentation of all the blocks. April's meeting will be a party. We will have a reunion in the fall and hope to see lots of dynamite quilts (or tops).

6-INCH BLOCK OF THE MONTH CLUB

1st Tuesday of the Month • 9:30-11:00am • FREE

Each month a new six inch block is presented. This is a great chance to make new friends and use up scraps! New members are welcome! Hosted by Kathy Willis.

BLOCK OF THE MONTH CLUB

1st Thursday of the Month • 10:00-11:00am • FREE

Pieceful Nights, a sampler quilt by Lori Smith, is the project chosen for 2009. One block will be done each month. You will make the center square on your own. New members may join at any time. Pattern required.

STRIP CLUB

2nd Thursday of the Month • 6:00-7:30pm • FREE

Wauaukee's only strip club. Each month a pattern will be presented using 2½" strips, and we'll have a strip exchange based on a theme. April's colors are brown and tan, May is warm colored batiks, and June cool colored batiks. Hosted by Jane Vaughan.

APPLIQUE CLUB

2nd Friday of the Month • 9:30-11:30am • FREE

Bring any appliqué project you are working on or have questions about. Share ideas, help, and conversation as you complete your project. Hosted by Loretta Holmen.

UFO CLUB

3rd Wednesday of the Month • 9:30-10:30am • FREE

UFO Club is for anyone who can claim to have three or more UnFinishedObjects (quilts) needing more than the binding. Register your UFO's by bringing them to any meeting. Each time you complete a UFO, you may enter your name to win a \$25.00 Mill House gift certificate. Drawing occurs twice a year at the June and December meetings. Hosted by Dianne Larson.

OPEN SEWING

2nd Saturday and 3rd Thursday of the Month

EQ CLUB

3rd Thursday of the Month • 10:00-11:00am • FREE

Do you have EQ5 or 6 and want to explore its uses with other quilters? The Equinox Mystery will be presented along with tips and ideas for using Electric Quilt. Bring a laptop if you can. All skill levels are welcome. Hosted by Fran Heisey.

NEARLY INSANE CLUB

3rd Thursday of the Month • 6:30-7:30pm • FREE

Nearly Insane is a book by Liz Lois documenting a quilt made in 1870. The quilt has 98 six inch blocks, some simple and some not. Each month Kathy presents one to four blocks and discusses the best ways to construct each one. Book required. **Last meeting is April 16.** Hosted by Kathy Doyle.

Class Schedule

TEE SHIRT QUILT

Saturday, March 28, 9:30-2:00

Memory quilts make great gifts for many occasions. Bring in the tee shirts you wish to use. Dianne will show you several different ways to make tee shirt quilts using any number of shirts. ☎

Instructor: Dianne Larson \$35



BEADING IN A BIG WAY

Sunday, March 29, 12:30-3:30

Have you ever wanted to sew larger beads or buttons onto your quilts, but you weren't sure how to make them look both great and secure? This class covers many of the ways to incorporate larger beads, buttons, and cabochons into your quilts and bead embroideries. You will create a sampler displaying a variety of techniques for beautifully and securely attaching larger beads and buttons to quilts or other fabric items. Beginning Bead Embellishment class or prior experience with bead embroidery helpful but not required.

Instructor: Lisa Binkley \$30

INTERMEDIATE QUILTING

Wednesdays, April 1, 8, 15, 29, 9:30-12:30

Have you made a quilt, or done some piecing? Are you ready to stretch your block building skills beyond straight lines and triangles? Our intermediate class will increase your knowledge, skill, and confidence in quilting while you learn to master "hard" blocks. You'll be amazed at what you can make.

Instructor: Denise Matson \$50

Class Schedule

FAN SWEATSHIRT JACKET

Saturdays, April 4 & 18, 9:30-12:30



Roberta has a knock out jacket pattern. You basically cover a sweatshirt with fan shaped strips which make you look thin and hide most of the sweatshirt. You end up with a soft, cozy,

flattering jacket. Batiks make an especially classy look.

Instructor: Roberta Phillips \$40

OVAL TOOTHBRUSH RUG

Tuesdays, April 14 & 21, 9:30-12:30

This is a great class for learning how to make area rugs and using scraps. The name comes from the original needle which was a broken off toothbrush handle. The rugs are easy to make, can be any size, and any color.

Instructor: Phyllis Karr \$35

MARINER'S STAR

Thursdays, April 16 & 30, 5:30-8:30

If you appreciate the precision of foundation paper piecing but don't know how to get started, or if you have always wanted to try a Judy Niemeyer pattern, this class is for you.

This quilt design by Judy Niemeyer combines the Mariner's compass surrounded by floating stars with a foundation paper pieced border for a truly spectacular effect.



Instructor: Donna Mather \$55

MY SPRING GARDEN

NEW!

Thursday, April 23, 5:30-8:30

Learn some new techniques. Pick your favorite tulip colors to make this cute little wallhanging. Learn a "faux miter" technique in the block construction and also work with side and setting triangles with a diagonal set.

Instructor: Mary Cain \$30

CARRIAGE WHEEL RUG

Thursdays, April 23 & 30, 5:30-8:30

Would you like to make a round rug, table mat, or chair pad? This rug pattern is very adaptable to any size. You may use cotton or wool fabrics. Any round frame 10" or bigger can be used. If you would like to use a carriage wheel and don't have one, arrangements can be made with Phyllis to obtain one for the class.

Instructor: Phyllis Karr \$35

PRAIRIE SAMPLER WORKSHOP

NEW!

Tuesdays, April 28 & May 5, 2009, 9:30-3:30

This class takes the mystery out of how to arrange blocks of varying sizes in the same quilt. The blocks were inspired by the Little House on the Prairie Series and adapted from Linda's book *Quilting with Laura*. Linda shows you the necessary techniques to machine piece the blocks as you take a step back in time to the days of Laura Ingalls Wilder's childhood. All skill levels. ④



Instructor: Linda Halpin \$95

ADVANCING ON MACHINE QUILTING

Friday, May 1, 10:00-3:00

Advancing on Machine Quilting has been developed to provide the guidance and time to practice the skills learned in the beginning class. Additional strategies for quilting on your home sewing machine will be presented that will take you to the next level. A simple placemat is pieced before class. During class you will quilt the placemat using your new knowledge. ④

Instructor: Cindy Fenster \$50

INTERMEDIATE QUILTING

Thursdays, May 7, 14, 21, & 28, 5:30-8:30

This class is designed for someone who has completed a beginner class, or had some prior quilting experience, and wants to learn more. You will learn some harder piecing and the basics of paper foundation piecing and appliqué. It's a great class for expanding your quilting knowledge.

Instructor: Donna Mather \$55

I SPY...NOT JUST FOR KIDS

NEW!

Saturday, May 9, 9:30-3:30

Have you always wanted to learn how to piece an I Spy hexagon quilt? This class is for you. You can either make a traditional I Spy quilt using kids' novelty prints, or use your favorite 'adult' fabrics to make a quilt or wallhanging for yourself. Either way it's a winner. ④

Instructor: Denise Matson \$55

PATRIOTIC RUNNER

NEW!

Tuesday, May 12, 9:30-12:30

This is a great runner or welcoming door banner for all your summer parties. Use it on an inside or outside door. It is an easy project using simple piecing and machine quilting (not free motion) that anyone can do. *Country Woman Magazine* featured this pattern of Mary's in a 2006 issue.

Instructor: Mary Cain \$30





Our all day classes have the option of a catered lunch or bring your own brown bag lunch.

RAG QUILT

Wednesday, May 13, 9:30-12:30

Cuddle up tonight in one of the coziest and easy to make quilts! Made from your combination of flannel, brushed, or woven cotton with a quilt-as-you-go technique, you'll be ready to clip those seams for that raggy, fuzzy look by afternoon. If you can cut a square and sew an x, you'll be a pro with a rag quilt. The pattern is easily adapted to any size quilt.



Instructor: Denise Matson \$30

MARKING SOLUTIONS

NEW!

Thursday, May 14, 6:00-8:00

If you dread the marking process, are confused by all the different tools, and challenged by difficult to mark fabrics, this class is for you! Learn about the latest innovations in marking tools, how to change the size of designs, make block designs into multi-sized borders, and create continuous line designs. Joanie brings a wealth of information from her art background and many years of quilting experience. She demonstrates her inventive methods discovered when necessity pushed invention in marking her contest quilts. She makes this fun and creative while impressing the importance that marking will bring to your machine quilting experience.



Instructor: Joanie Zeier Poole \$25

BACKGROUND BONANZA

NEW!

Friday, May 15, 9:30-3:30

From stippling to simple grids, filling quilt background with interesting patterns is not only possible with machine quilting, but encouraged. In this hands-on workshop, the texture of the background of the quilt is covered. Join Joanie for a very full and creative day expanding your free-motion skills creating a wholecloth sampler of patterns. Enjoy Joanie's impressive portfolio of stitched examples. Any experience level, any machine quilter, domestic or longarm is welcome. More important to your success than previous free-motion experience is a desire to learn, and a machine that is in good working order that you have tried the thread in advance of class. (U)

Instructor: Joanie Zeier Poole \$55

DID YOU KNOW?

The best preserved examples of ancient quilted materials are from a woman's tomb at Mashan in Jiangling from about 300 BC. Go online and look at these exquisitely embroidered, quilted objects (Figures 23-26) from the book *Chinese Silk: A Cultural History* by S. J. Vainker.

BEGINNING BEAD EMBELLISHMENT

Saturday, May 16, 9:30-3:30

In this class, Lisa, an accomplished beader, will explore all of the basic stitches used in bead embroidery. You'll go home with a sampler containing lots of bead embroidery stitches, hand-outs with information about beads, threads, and embroidery techniques, and many fun new ideas to try at home. A kit with the sampler base, beads, needles, and thread will be provided at the beginning of class. All you need to bring are some scissors for cutting thread and a desire to learn some new ways to liven up quilts, garments, and just about anything made of fabric. (U)

Instructor: Lisa Binkley \$50

AMY BUTLER FRENCHY BAG

NEW!

Friday, June 5, 9:30-12:30

Finally, a purse designed with the mid-west in mind, Amy Butler's "Midwest Modern" Frenchy Bag is one of the cutest, easiest bags to create. During this class we will be piecing two coordinating Butler prints (or other fabric of your choice) to make a cute, classy handbag for any occasion. Come join the fun, and start carrying around an Amy Butler original.



Instructor: Jesse Dresen \$30

RAG QUILT

Saturday, June 6, 9:30-12:30

Cuddle up tonight in one of the coziest and easy to make quilts! Made from your combination of flannel, brushed, or woven cotton with a quilt-as-you-go technique, you'll be ready to clip those seams for that raggy, fuzzy look by afternoon. If you can cut a square and sew an x, you'll be a pro with a rag quilt. The pattern is easily adapted to any size quilt.

Instructor: Denise Matson \$30

TURQUOISE ODYSSEY

NEW!

Tuesday, June 9, 9:30-12:30

This dramatic quilt from *Quilt Mania Magazine* gives scrap quilting a new look. Each rectangular block contains three framed windows of patches featuring an array of fabrics in your favorite color palette. Judy provides her adaptation of the instructions for readily piecing this 70" x 82" quilt using fabric strips and an accurate 1/4" seam allowance.

Instructor: Judy Ward \$30

www.millhousequilts.com

Check out the classes online for more photos and updates.

Class Schedule

I SPY...NOT JUST FOR KIDS

NEW!

Wednesday, June 10, 9:30-3:30

Have you always wanted to learn how to piece an I Spy hexagon quilt? This class is for you. You can either make a traditional I Spy quilt using kids' novelty prints, or use your favorite 'adult' fabrics to make a quilt or wallhanging for yourself. Either way it's a winner. 🍴



Instructor: Denise Matson \$55

INTRODUCTION TO MACHINE QUILTING

Friday, June 12, 10:00-3:00

Learn to do your own machine quilting. Cindy has extensive quilting experience and specializes in helping you get the most out of your home sewing machine. You will learn how to choose the best quilting design for your quilt and the logistics of how to actually get the quilting onto your quilt. All skill levels. 🍴

Instructor: Cindy Fenster \$50

DRAFTING PATTERNS TO SUIT YOURSELF

NEW!

Saturdays, June 13, 20, & 27, 10:00-12:00



You will lose any shyness about drafting patterns in this back to basics class where you learn to categorize quilt blocks, identify their underlying grid, and then draft geometric quilt patterns in

any size. These simple, versatile methods using a yardstick and paper are for those a bit intimidated by computer programs as well as those interested in learning to customize quilt patterns to individual size requirements and/or creating personalized quilt designs.

Instructor: Patricia Delker \$45

PAPER PIECING

Thursday, June 18, 6:00-8:30

Learn an easy way to sew complicated angles and handle small pieces by using the paper piecing technique. Kathy has developed an easy method to teach the steps involved in accurate paper piecing. You won't be afraid to try blocks that used to look really hard.

Instructor: Kathy Doyle \$30

Thanks to Madison Sewing & Vacuum we have several Janome sewing machines that are available to rent for a modest charge if you are unable to bring your machine to a class. We also have a needle felting machine that may be rented on an hourly basis.

ERGONOMIC STRATEGIES AND SOLUTIONS IN QUILTING

NEW!

Friday, June 19, 9:30-12:00

In this inter-active class, Janalee, occupational therapist, ergonomic consultant, and a quilter will review the continuum of the quilting process from laying out the fabric to binding the quilt. You will have the opportunity to do your own self-assessment identifying areas in which you wish to increase your comfort while enjoying the art of quilting.

Instructor: Janalee Reineke Lyth \$30

BASKETS QUILT

NEW!

Tuesday, June 23, 9:30-12:30



This nice size, five basket quilt makes an attractive wallhanging that would look great behind a couch or above a bed (make it to match the bed quilt). It would also be nice used as a large table mat. Learn how to make the easy basket block and how to set blocks on point in diagonal rows.

Instructor: Mary Cain \$30

BEGINNING PUNCHNEEDLE

Wednesday, June 24, 9:30-12:30

Would you like a nice, easy, portable project? Punchneedle is quick and fun. It's like painting with floss. Using a special needle, you work from the back side to create a picture.

Instructor: Krista Wallace \$30

TOTE BAG

USING THE COTTON THEORY METHOD

Saturdays, June 27 & July 11, 9:30-4:00

Make a reversible tote bag using the Cotton Theory method of quilt as you go. You can use that favorite collection of fat quarters you've been saving for the perfect project, or make a scrappy bag using fabric from your stash. This class works well for any skill level from beginner to experienced. It also works with machines that do fancy stitching, and those that only do straight and zig zag. You will learn reversible binding which uses two fabrics so the binding will match both sides of your bag. 🍴

Instructor: Alice Brickl \$50

CLASS AND EVENT POLICIES

You may register for a class in person or by phone (608) 849-6473. Classes/events must be paid for at the time of registration. A class supply list can be picked up at the store, or mailed to you. Double punches will be given on your punch card for class supplies. Cancellations more than one week before a class/event will forfeit 10 percent of the fee. Cancellations one week or less before a class/event will forfeit the entire fee. Refunds are given as store credit. Mill House Quilts reserves the right to cancel a class/event one week before if there is insufficient enrollment. You may send someone in your place. Our classrooms are upstairs. We are happy to assist you in carrying sewing machines.



Our all day classes have the option of a catered lunch, or bring your own brown bag lunch.

April

SUNDAY	MONDAY	TUESDAY	WEDNESDAY	THURSDAY	FRIDAY	SATURDAY			
			Intermediate Quilting 1 9:30-12:30	Block of the Month Club 2 10:00-11:00 QFL 6:00-7:00	3	Fan Sweatshirt Jacket 4 9:30-12:30			
5	6	6 th Block of the Month Club 9:30-11:00	7	Intermediate Quilting 8 9:30-12:30	9	Strip Club 6:00-7:30	10	Applique Club 9:30-11:30	11
12	13	Oval Toothbrush Rug 9:30-12:30	14	UFO Club 9:30-10:30 Intermediate Quilting 9:30-12:30 Gadget Guru 10:30-1:30	15	EQ Club 10:00-11:00 Mariners Star 5:30-8:30 Nearly Insane Club 6:30-7:30	16	17	Fan Sweatshirt Jacket 18 9:30-12:30
CLOSED: EASTER						BUS TO CHICAGO		BUS TO CHICAGO	
19	20	Oval Toothbrush Rug 9:30-12:30	21	22	My Spring Garden 5:30-8:30 Carriage Wheel Rug 5:30-8:30	23	24	25	
26	27	Prairie Sampler 9:30-3:30	28	Intermediate Quilting 9:30-12:30	29	Carriage Wheel Rug 5:30-8:30 Mariners Star 5:30-8:30	30		

May

SUNDAY	MONDAY	TUESDAY	WEDNESDAY	THURSDAY	FRIDAY	SATURDAY					
					Advancing on Machine Quilting 10:00-3:00	1	2	BAG LADY SHOP HOP			
GARDEN PARTY 1:00-3:00	3	4	6 th Block of the Month Club 9:30-11:00 Prairie Sampler 9:30-3:30	5	6	Block of the Month Club 10:00-11:00 Intermediate Quilting 5:30-8:30 QFL 6:00-7:00	7	8	Applique Club 9:30-11:30	9	Quilt Appraisals 9:00-5:00 I Spy 9:30-3:30
10	11	Patriotic Runner 9:30-12:30	12	Rag Quilt 9:30-12:30	13	Intermediate Quilting 5:30-8:30 Marking Solutions 6:00-8:00 Strip Club 6:00-7:30	14	15	Background Bonanza 9:30-3:30	16	Beginning Bead Embellishment 9:30-3:30
17	18	19	UFO Club 9:30-10:30 Gadget Guru 10:30-1:30	20	EQ Club 10:00-11:00 Intermediate Quilting 5:30-8:30	21	22	23			
24	25	26	27	Intermediate Quilting 5:30-8:30	28	29	30	31			
	CLOSED: MEMORIAL DAY										



100 Baker Street • Waunakee, WI 53597
Hours: Monday – Saturday, 9am – 5pm
 Thursday, 9am – 8pm • Sunday, 12 – 4pm

APRIL–JUNE 2009

PRSR STD
 U.S. POSTAGE
PAID
 Permit No. 1121
 Madison, WI

BUSES WELCOME!

MAILING LIST UPDATE

Please notify us if there are any changes or errors in your address. Email us at info@millhousequilts.com. Include both your old, or incorrect, and new, or correct, information.



Check out the classes online for more photos and updates.
www.millhousequilts.com

June

SUNDAY	MONDAY	TUESDAY	WEDNESDAY	THURSDAY	FRIDAY	SATURDAY					
	1	6" Block of the Month Club 9:30-11:00	2	3	Block of the Month Club 10:00-11:00 QFL 6:00-7:00	4	Frenchy Bag 9:30-12:30	5	Rag Quilt 9:30-12:30	6	
7	8	Turquoise Odyssey 9:30-12:30	9	I Spy 9:30-3:30	10	Strip Club 6:00-7:30	11	Applique Club 9:30-11:30 Introduction to Machine Quilting 10:00-3:00	12	Pattern Drafting 10:00-12:00	13
14	15	16	UFO Club 9:30-10:30 Gadget Guru 10:30-1:30	17	EQ Club 10:00-11:00 Paper Piecing 6:00-8:30	18	Ergonomic Strategies and Solutions 9:30-12:30	19	Pattern Drafting 10:00-12:00	20	
21	22	Baskets Quilt 9:30-12:30	23	Beginning Punchneedle 9:30-12:30	24	25	26	Cotton Theory Tote Bag 9:30-4:00 Pattern Drafting 10:00-12:00	27		
28	29	30									